



Lampson BLUE

May-August 2011
Volume 1, Issue 13

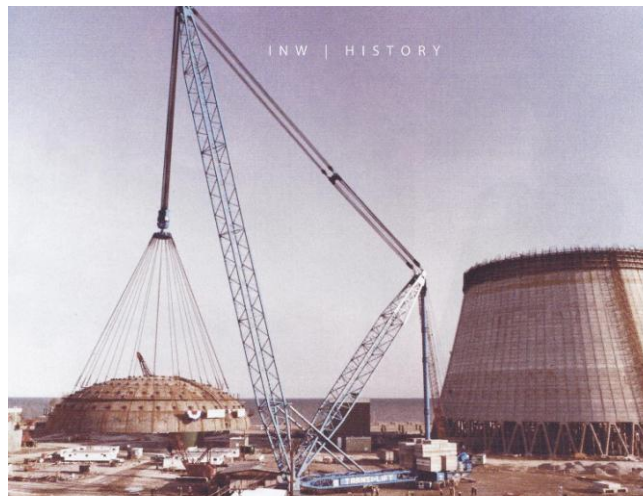
Lampson International LLC, 607 E. Columbia Dr, Kennewick, WA 99336
www.lampsoncrane.com klampson@lampsoncrane.com 509.586.0411

INSIDE THIS ISSUE

- 1 Headline News
- 2 Headline News Continued
- 3 Headline News Continued
- 4 News and Events
- 5 News and Events Continued
- 6 Safety
- 7 News from Around the World
- 8 Lampson Lifts
- 9 Announcements
- 10 Announcements Continued
- 11 Announcements Continued

Headline News – Lampson International, LLC One Man’s Heavy Lifting Changed an Industry

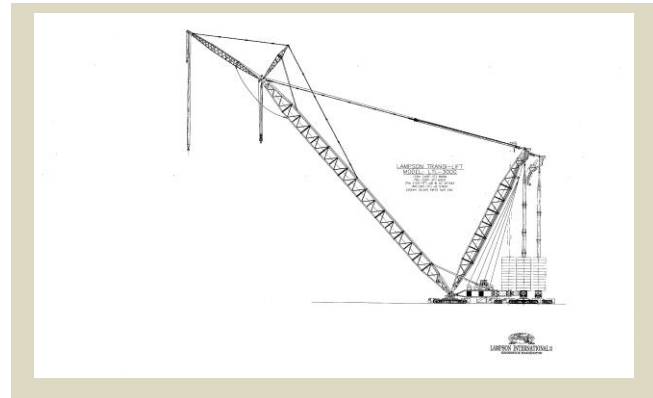
*By Wendy K. Leigh
Inland Northwest Magazine
May/June 2011*



Neil Lampson knew a little something about movement. From hauling local produce and fruit at age 15 to running the Lampson family’s trucking company after the death of his father, it wasn’t a far stretch to coast into a position as one of the world’s largest mobile crane makers, lessors, and operators.

After establishing an eastern Washington crane company in 1946, now known as Lampson International, the hometown boy from Kennewick High School lived long enough to see his alma mater’s stadium named after him almost 50 years later. His company’s flag now floats in the autumn breeze at football games alongside Old Glory, the flag that he proudly served under in WWII. While Neil was gone for three years operating as a ferry pilot and instructor for cadets in the U.S. Army transport command, the fields near his old stomping grounds were playing another role in the war effort. The B Reactor at Hanford nuclear facilities was busy creating plutonium for the atomic bomb that leveled Nagasaki, Japan, and led to the war’s finale.

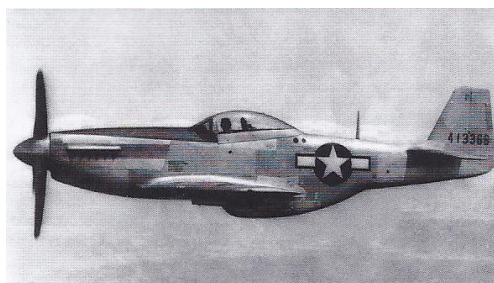


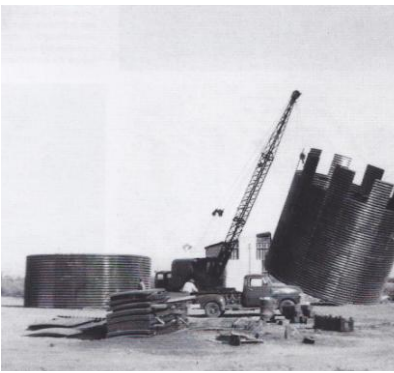


Little did the young man from Kennewick know that the historical landmark in his own backyard would be the impetus for a nuclear industry, which Lampson International would later service in a big way-or that his own company would one day be shipping cranes to aid in the construction of nuclear power in the very country that Hanford's plutonium had been instrumental in defeating.

About 28 years ago, Lampson delivered the first of many Transi-Lift cranes to the Hitachi company in Japan to assist in erecting new nuclear power plants. The LTL-2000 has had a presence there for 28 years, and now holds its own small place in the historical nuclear disaster that hit Japan in 2011. A Lampson crane sold to Hitachi years earlier survived the tsunami that hit the Port of Hitachi and wreaked havoc on the country's nuclear power facilities. The LTL-2000 sustained water damage after sitting under a few feet of water, but was salvaged. Meanwhile, the LTL-3000, the latest and greatest mobile land-based crane from Lampson, was slated to be used in the construction of a new generation of an advanced boiling water reactor at the Higashidori-1 nuclear power plant for Tokyo Electric Company. The delivery, scheduled for December 2011, has been delayed for at least a year due to ongoing construction efforts.

It's not surprising to anyone who knew Neil, or his wife, Billie Jane, that they would take what was then a huge gamble by investing everything into a start-up that required massive pieces of risky equipment. Neil was no stranger to danger, having had his hands on the controls of infamous aviation classics like the P-38 Lightning, P-39 Air Cobra, C-47 cargo airplanes, the P-47, (referred to the inner circles as "The Jug"), and the formidable P-51 Mustang. He didn't hold back his enthusiasm for life or for flying when it came time to raise his son, Bill Lampson, now President and CEO of the company. Neil taught a young Bill how to fly by perching him on an upside down garbage can in the front seat of Neil's Stearman biplane, to get him high enough to see through the windshield of the cockpit.





Lampson International was connected to the nuclear industry from the very beginning. With the arrival of an 18-ton-capacity army surplus crane into the harbor near Kennewick, Neil's newest dream came to life: getting a piece of the action placing footings for multiple small homes being constructed in Hanford. The arriving families were new workers at what was to become the nation's largest nuclear plant.



Though Neil had the intuition and inspiration, it was his wife Billie Jane who hit the pavement, with a kid under each arm, to promote the idea, led the cranes in, and put them to work. She managed the company for so many years while raising three daughters and their son, Bill. She had already shown an acumen for hard work and success during Neil's wartime absence, when she bought a house and then took in military wives to help pay for it.

The Lampson's operated a few years with small conventional cranes, assisting what were then unknown local entrepreneurs, taking on jobs like installing a smoke stack for a juice company that was to become know to the world as Welch's. Neil soon jumped on the chance to provide industries with needed cranes for larger capacities, higher hook heights and increased lift radii. He hit on the secret for his companies signature design after proposing the construction of a 1000-U.S.-ton lift crane that had not only the capacity for larger loads, but the versatile functionality of conventional mobile cranes. The company engineered, manufactured, assembled and tested the first Transi-Lift in 1978 to be used at a nuclear construction site, and has been going strong ever since. Transi-Lifts are now manufactured in several models ranging from 350 U.S. tons to 2600 U.S. tons, with the arrival of the new 3000-ton crane for Japan patiently waiting in the wings. They also field a fleet of over 350 major pieces of equipment that are rented to the construction industry, and build custom heavy lift rigging gear.



From his beginnings on a family farm in Badger Canyon near Richland, spending his days cutting asparagus, herding cattle, sewing potatosacks, and milking cows, Neil F. Lampson made a lot of moves-and most of them were good ones. In 1992, Billie Jane, Neil, and their son Bill were all named Tri-Citians of the year, the community's highest honor.

News & Events - 9/11 DISASTER: World Trade Center artifact heading to Kennewick

By Tri-City Herald Staff
Thursday, June 23, 2011

Ladies and Gentlemen, this story was written by a staff member at the Tri-City Herald in Kennewick, WA. As the editor of *Lampson Blue*, I would like to provide you with a bit of back ground on how this project came to be. About a year and a half ago Bill's sister, Jenny Lampson, read an article about various cities around the United States that were acquiring pieces from the World Trade Center and using them to create memorials in honor of the brave men and women who lost their lives on that historic day. Having read this, Jenny approached Bill about the possibility of acquiring an artifact to erect a memorial in the Tri-Cities, and that is how the artifact came to reside in our community.

Kennewick The bent remains of a column left from the 9/11 destruction of the World Trade Center Towers is headed to Kennewick, thanks to Lampson Crane of Kennewick.

The artifact was picked up in New York Tuesday with Lampson coordinating and paying for its transportation.

It was donated by the Port Authority of New York and New Jersey to Kennewick after Bill Lampson, President of Lampson Crane, approached city leadership about the possibility of obtaining and displaying an artifact from 9/11.

Kennewick officials agreed, not knowing if they would receive a piece of metal that would fit into a display cabinet or the nearly 6,000 pound column that's heading across the nation now.

Much of the steel from the twin towers was melted and used for a Naval Ship, so Kennewick was fortunate to be one of the communities to receive one of the artifacts, said Kennewick Fire Marshal Mark Yaden.

Kennewick plans a public viewing of the steel column while it is on the trailer, possibly on July 4.

A permanent memorial with the column as its centerpiece is planned within the new Southridge Sports Complex near Highway 395. The monument is planned to be dedicated on the 10th anniversary of 9/11 later this year.



This bent column was part of the World Trade Center in New York that was destroyed Sept. 11, 2001. It is being donated by the Port Authority of New York and New Jersey to Kennewick, thanks to Lampson Crane.

Hydroplane Race Weekend 2010



Lampson International hosted the 28th Annual Lampson Company Golf tournament and participated in the 46th annual Hydroplane Races. Each year our company hosts 250 to 300 vendors, customers and guests for a three day event to thank them for their business and loyalty to Lampson. This year brought about another successful golf tournament and a great day at the races. A special thank you goes out to all of the Lampson employees, spouses and significant others who helped make "Boat Race Weekend 2011" the best it could be. **THANK YOU!!!!**



Safety – Top of Mind Awareness

By Bruce Stemp



First off I would like to congratulate everyone on what appears will be a reduction in OSHA Recordable incidents this year. Most people's adherence to the more stringent PPE rules are helping in this reduction, and continued adherence by all will even further reduce our rates. We have taken a step in the right direction, but the journey is far from over. Our clients continue to set the bar higher and higher in their efforts to ensure that only the safest companies are allowed to work on their projects. We need to increase our efforts in order to keep pace with these requirements and keep us eligible for upcoming work.

Safety is still often perceived as a necessary evil, slowing down production and making life uncomfortable for the worker. Although a common perception, it is about as far from the truth as it gets. Taking five minutes to get the right tool can save hours and hours in an emergency room visit alone, and that's not counting the lost production from an injured worker unable to perform his job for the next few weeks. Working safer and smarter at the same time can meld safety and production into a winning combination. That works for the company and the worker every time. No one - at least I would hope not - purposely works unsafely. It is usually done out of ignorance to the hazard or complacency. We need to continue to be vigilant not only for ourselves, but for our co-workers as well. We should continue to point out unsafe actions in a positive manner, while looking for rectification not retribution. We can coach each other to a safer workplace if we all are onboard and willing to coach and be coached.

Many of the jobsites we are working on today are taking a "zero tolerance" policy towards any safety infraction. That means - you don't wear your safety glasses or fall protection and you get a free trip to the gate without eligibility for rehire. That's not only for the worker, but sometimes the company as well. Is that a little harsh? Maybe if the offense is committed by one with little experience, but probably not when the offender has been around a while and definitely knows better. In today's safety conscious and litigious society, companies must minimize risk wherever they can. If that means removing risk takers, real or perceived, from the work force then that is what they must do.

At Lampson we have good people with lots of safety experience and knowledge and we don't want to see them removed from a job for a momentary lapse in judgment or simple forgetfulness. Making efforts to develop good safety habits everyday at the shops, will help ensure that we don't "just forget" when we are on a project. It's an old cliché, but "Safety" really is a behavior, in fact, a learned behavior that we have to keep studying every day. We can't relax on it for even a minute since an "accident waiting to happen" never rests. Keep up the good work and let's keep moving in the right direction. We have come a long way in a few short years and with everyone's help we can continue to go much further.

News from Around the World – Increased Demand Down Under

By John Lee

The Australian arm of Lampson is in a very strong position going into the second half of 2011. A large percentage of our crane fleet is working on bare and dry hire and a good number of our cranes were recently sent out to various sites across the country. The addition of the new cranes to the current fleet will be appreciated as demand increases along with market confidence in coal mining, LNG and other Mineral related construction projects.

Current Projects include a Manitowoc 4600 Tower and M250 Truck crane with Luffing Jib. It has been some time since the M4600 Tower and M250T Luffing jib attachments have seen use however, these components are currently back in action on a RCCU Turnaround at Shell's Refinery in Geelong in Victoria. The cranes shall be utilized to provide capacity and reach within the Brownfield site where other cranes would not provide the specific requirements of reach, capacity, and clearance - and at the right cost.

Another Lampson Australia project includes a M2250 MAX-ER with Luffing Jib. Lampson is returning to an old customer and a site where we had provided cranes during the construction phase of the Cockburn Cement facility in Western Australia. Reaching 112m high with 300' (91.4m) of #79 boom and 200' (60.9m) of #44 Luffing Jib, we are planning to remove two of the top cyclones and ducting that have deteriorated within a corrosive working environment. The M2250 MAX-ER with Luffing Jib is the perfect crane for this project and this model crane has proven itself time and again as a great investment through its versatility when combined with the MAX-ER and Luffing jib attachments. This results in capacity improvements from the standard lift crane options.

Our jacking equipment is staying busy and finding favour among the coal mines. Our EZ-600 Face Shovel Jacking Systems have been performing well over the last few months. We recently completed a jacking project in Saraji Coal Mine in Queensland; with an almost standard request - we jacked a P&H 4100 upper-works and separated from the car-body to allow access to the revolving frames and crawlers. Lampson has pioneered this system in Australia and by using our in-house capabilities has developed a system that is safe and efficient as well as cost effective for many customers who return to us for equipment and personnel on every shutdown.

Finally, from the transport side of the business, our fleet of trailers has grown considerably over the past 18 months. We are well positioned to provide transport services and equipment on the many upcoming LNG projects in North Western Australia and Gladstone in Queensland. We have recently provided the transport of various transformers and power station related equipment from ship to site along with the cranes for installation when required.



Lampson Lifts – Lampson Performs Gate Replacements

By Kate Lampson

Lower Monumental Dam

In the summer of 2010, The US Army Core of Engineers and their contractor, Dix Corporation approached Lampson International about renting one of their Transi-Lift® LTL-1200's to perform a gate replacement at Lower Monumental Dam in Washington State. The scope of the project included assembling and load testing the Transi-Lift®, off loading three new gate sections from a barge, removing the old gate section from the dam and finally installing the three new gate sections.

With a narrow staging area, Lampson was faced with a very challenging assembly. To assist with the construction of the Transi-Lift®, Lampson used several of their own conventional crawler cranes and a Manitowoc 4100 equipped with a Ringer© attachment. Once the LTL-1200 was fully assembled, it stood 340 feet tall, had 3200 Kips of counterweight and performed lifts up to 648,500 pounds.

Lampson had four representatives on site throughout the six month project and at completion, Lampson left with another successful job and a very satisfied customer.



The Dalles Dam

In the third quarter of 2010, the US Army Corp of Engineers and their contractor, Dix Corporation hired Lampson International to replace the Downstream Navigation Lock gates at The Dalles Dam on the Columbia River in the Pacific Northwest.

The scope of the project included assembling and load testing one of our Lampson Transi-Lift® LTL-1100 mobile cranes, removing two old gate sections and laying them down for demolition, offloading two new gate sections from a floating barge and finally, installing the new pre-fabricated gate sections.

In order to have the proper equipment for the project, Lampson mobilized a Manitowoc 4100W, a Manitowoc 3900, and a Grove 760E Rough Terrain Hydraulic Crane. In addition, the Lampson Transi-Lift® LTL-1100 was assembled on site with 200' of main boom and 2400 kips of counterweight. The two new gate sections slated for replacement weighed approximately 870,000 pounds.

During the preparation for the new gate installation, weight estimates grew from 725,000 to 949,000 pounds. While the new numbers were within the Transi-Lift's® capacities, Lampson was required to reconfigure the Transi-Lift®. This was completed in one ten hour shift to gain 200,000 pounds of capacity.



The project lasted six and a half months and although it presented a very confined work space and many other unique challenges, Lampson's use of their proprietary Transi-Lift®, coupled with exemplary planning by the Dix Corporation team, the river was opened on schedule for commercial navigation.

Announcements

Birthday's: Happy Birthday to the following Lampson employees!!!

January:

Jacob Abken, Annette Flores, Ken George, Tuan Tripp, Julio Andrade, Andrew Denny, Raymond Diaz, Dennis Haughton, Christopher Jurgens, Todd Longie, Shane O'Hair, Kevin Overstreet, Jonny Scroggins, Stephan Shelestovskiy, Mike Stump, Rick Young, Doug Becker, Brett Weavell, Henry Kucharski, Debbie Godwin, Keith Chapman, Jon Kulk, Joshua Huber

February

Sally Kanehe, Jim Maiocco, Ryan Mathews, Aaron Stephens, Joe Amato, John Crawford, Dave Faul, Tyler Gales, Bradley Hatfield, Dennis Kimbrell, Clay Kunde, Keith Marsh, Gennadiy Melnik, Bobbie Williams, Dan Poston, Paul Berry, Susan Cumins, Joy Bishoff, Craig Nass, Jason Maybury, Adam French, Rory Hutchings

March

Cole Apgar, Lance Badeaux, Patsy Bowers, William Braffhart, Derek Cannon, Malcom Dodt, Paul Lavrentiev, Rick O'Hair, Bryan Pepin-Donat, Mike Rachels, Rusty Rutherford, Blake Stemp, Jackie DeBord, Tim DeBord, Nick Greer, Colby Kadinger, Gary Marcotte, Sean Markussen, Wayne McGee, Danh Muong, Patrick Osmundson, Dave Shafford, Chad Soland, Eric Verdun, Denis Babineau, Dale Chevrier, Dale Godfrey, Mathew Woolerton, Michael Finnigan, Glenys Chester, Ryan Edwards, Dave Stafford, Nicole Gallen, Jan Klippel

April:

Jolene Brown, Bucky Gros, Anna Marie Lampson, Stan Lupinski, Gary Schweiger, Cory Bennett, Nathan Bodey, Jeff Davis, Nathan Giberson, Tom Hoover, Jared Johnson, Keith Johnson, Stan Meise, Alfred Ramirez, George Stork, Bill Suhr, Dakota Tripp, Greg White, Beverly Pittman, Guy Latham, Terrence Watson, Sophie Lambouras, Jeff Groom, Christopher Newton

May:

Todd Burnette, Hilary Barlow, Buddy Davidson, Terry Shipman, Jim Badger, Don Brown, Gunner Dixon, Mike Evanson, Ryan Harris, Randy Knight, David Kuhn, Nolan Larson, Jim Lewis, Patrick Meehan, Jeff O'Hair, Tanner O'Hair, Dan Phelps, Ian Rolfe, Travis Sharp, Mike Stevens, James Tilstra, Arthur Draper, David Stacey, Mark Schmidt, Karl Newman, Lee Bransdon, Jean-Marc Biram, Patricia Hayward, Alan Bedford, Anton Krkan

June:

Perry Allen, Bo Elliott, Roy Fee, Mike Leisenring, Kyle Tripp, Scott Barlow, Brandon Dickinson, David Firestone, Bill Gwinn, Steve Harvill, Randy Jackson, Chase Larson, Marvin Meise, HR Moore, Bill Reser, Jerry Schulder, John Swanson, Gary Talcott, Tom Hatfield, Vera Wilkinson, Malcolm Dodt, Patrick Burkhill, Luke Parkin, Norman Bridge, Alan Pattison, David Batters, Bill Quintal, Tony Gairns, Jim Crawford, Dale Crawford, Dustin Blakemore, Daniel Crawford, Shannon Glingan

July:

Joe Hinds, Byron Lampson, Peter Lampson, Don Marcotte, Randy Stemp, Dan Whitlow, Ron Winklesky, Craig Wood, Anthony Allen, Gary Bateman, Quinten Burnett, Kevin Cravens, Larry Dewitt, Hunter Evanson, Jacob Johnson, Patrick Knight, Jorge Limon, Jon Mirus, David Patterson, Cecil Phillips, Alyson Rowe, Mark Sanders, Joshua Stallbaum, Tate Stark, Catlin Stemp, Jordan Stemp, Kit Tripp, Jeff Woolley, Kevin Keiler, Craig Curtis, Phil Lunn, Andres Hancock, Scott Ferguson, Phillip Parish, Joedy Woolley

August:

Troy Bowman, Travis Cameron, Jose Chavez, Boyd Dale, Justin Gier, Steve Helton, Mike Heryford, Jenny Lampson, Aaron Mapston, Russell Wallace, Dennis Young, Mike Zerba, David Baker, Dan Brewer Jr., Bradley Coxen, Jason Davidson, Marvin Doss, Clint Dunagan, Tim Goforth, Will Hendricks, Dustin Hornbeck, Jerrold Hurt, Doyle Jordan, Steve Lampson, Matt Meise, David Oglesbee, Trevor Pielstick, Tom Raeder, Robert Reed, Terry Rice, Woody Savage, Pavel Shelest, Eduard Stupak, Anthony Trovillo, Michael Ulrick, Clay Whipple, Dennis Young, Tyron Ryland, Geoffrey Fisher, Eric Butterworth, Warren Mitchell, Shirley Chevrier, Bruce Stewart, Celest Park, Angelo D'Amico, Craig Hodgson, Warren Lucke

September:

Dean Ahlsten, Tom Cave, Frankie Connell, Tony Cornwell, Herb Coulter, Shawn Dixon, Shauna George, Bob Stork, Austin Carver, William Hall, Josh Hoover, Troy Johnson, Travis Jordan, Jim La Rowe, Fred Lewis, Esteban Lopez, Lance Malek, Terence Myers, Chris Silvers, Chase Stemp, Tom Strycula, Lukas Talcott, Nathan Boyd, John O'Donnell, Ranka Knezevic, George Griffiths,

Robert Burns, Bradley Eckman, Barry Gee, Glenn Wilmott, Paul Philip, Vicki Wilson, Timothy Watkins

October:

Ryan Cooper, Wes Goenen, Bill Haywood, Pat Mansfield, Tom Sanders, Randy Speer, Bruce Stemp, Cory Stemp, Alan Hayden, David Heiman, Tanner Hickman, Tony Orozco, Joel Raplee, Taylor Vorheis, Earnest Yanoff, Brian Holm, Dave Sutcliffe, John Cole, Lambertus Jansen, Norman Nightingale, Wayne Cooper, Scott Budden, Ty Connolly, Tony Jurd

November:

Jeff Abersfeller, Deanna Brooks, Bob Burke, Kathleen Hurt, Kate Lampson, John Rieker, Lana Laughlin, Hector Cardenas, Robert Carson, Don Christian, Travis Coulter, Ryan Foeppel, Butch Forbis, Brian Foster, Jerry Fuller, Roger Hoover, Viktor Ryadinskiy, Nate Sather, James Wandling, Gene Russell, Gary Appel, Charles Reitz, Lou Kenworthy, Michael Hulls, Jason Chapman, Henry Stewart, Lindsay Watkins

December:

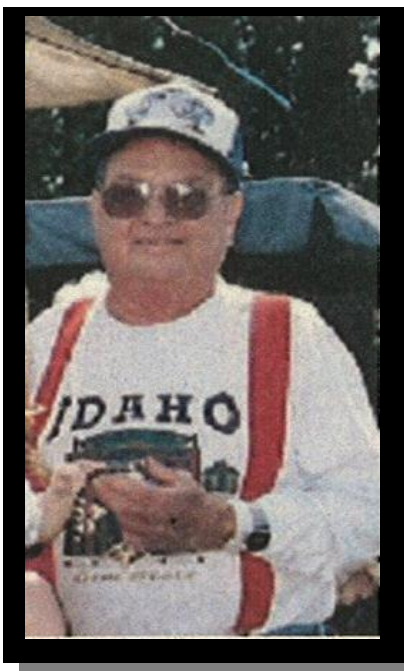
Eric Carlson, Rene Hernandez, Mary Lampson, Bill Lampson, Lance Wagner, Lisa Welter, David Barnes, Clyde Goeke, Bud Huntley, Eric Kuh, George Perez, Michael Rabbett, Steve Robbins, Nicholas Schaffer, Josh Stading, Glen Talcott, Lee Fischer, Nicholas Haywood, Kaylene Walter, Pat Rolt, John Lee, Dennis Thorburn, Kerry O'Brien, Ray Parker

Births: Ryan and Ashley Mathews welcomed their new son, Pearce Winston on July 12, 2011. He was born weighing 8lbs and 14oz. This is the first baby for the two of them and both mom and baby are doing well. Congratulations you two!

On July 31, 2011 Jenny and Alex Johnson welcomed their son Luke Abersfeller Johnson. This is the couple's second child and everyone is doing very well. Congratulations to the entire Abersfeller family!

Retirement: We would like to say a special thank you to Robyn Lunn for over 20 years of service with Lampson Australia. Robyn has been with Lampson Australia since its inception and has done a tremendous job for us over the years. She will be greatly missed by all of us and we wish her well as she enters a new chapter in her life. Thank you for everything Robyn and we wish you all the best!

Remembrances: May 28th, 2011 marked the passing of our good friend and former colleague Doc Rutherford. Doc spent over 30 years working with Lampson and remained close to many of us even after retirement. Although he is not with us physically, he is with us in spirit and his memory lives on always. We miss you Doc.



Candid: Our painter "Blue" and his favourite yard cat "Milo" on the job in Pasco.



Quote of the Month:

"Reason and calm judgement: the qualities especially belonging to a leader"

...Tacitus

